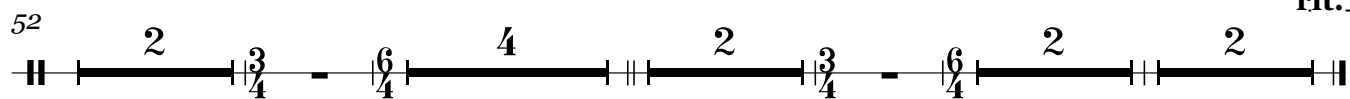
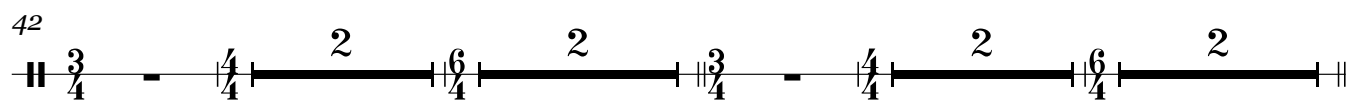
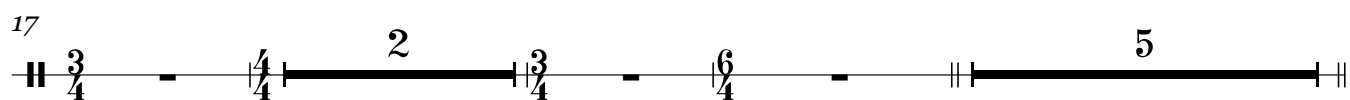
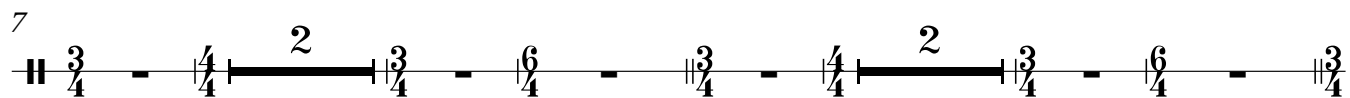


Triangle

Quam Benignus Es

Jānis Lūsēns



Quam Benignus Es

Jānis Lūsēns

7 *f*
 Qu-am_ be - nig-nus es, o, Do-mi-ne De-us._____

15 *f*
 Qu-am_ be - nig-nus es o,

22 *f*
 Do-mi - ne De - us._____

27 *p*
 Om-ni bus in - te spe - ran - ti - bus et a - ni - ma - bus te ti - men - ti - bus.

36 *pp*
 Quan - tum bo - num est in si - len - ti - o pres - to la - ri sa - lu - ta - re

45 *f*
 tuum._____ O_____ be - a - tum ho - mi - nem qui

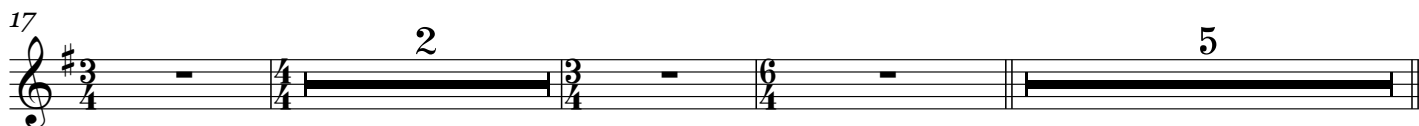
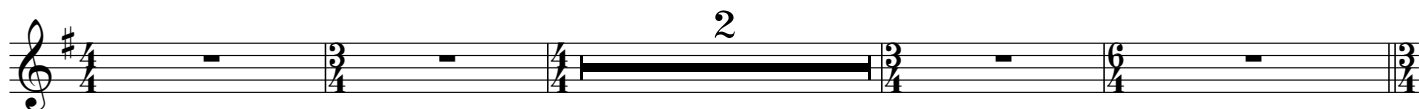
52 *p*
 tu pro - tec - tor - es Do - mi - ne._____

57 *p*
 Spes e - jus in te Do - mi - ne De - o, ip - si - us qui

rit.
 coe - lum et ter - ram fe - cis - ti._____

Quam Benignus Es

Jānis Lūsēns



27 *mf*

Om-ni bus in-te spe-ran-ti-bus et a - ni-ma-bus te ti-men-ti - bus.---

32 *pp*

Quan - tum bo - num est in si - len - ti - o praes - to - la - ri

40

sa - lu - ta - ri tuum.---

47

59 *p* *rit.*

qui coe-lum et ter - ram fe-cis-ti.---

Alto

Quam Benignus Es

Jānis Lūsēns

2

pp
Qu - am_ be - nig - nus es o, Do - mi - ne De - us._____

2

Qu - am_ be - nig - nus es o, Do - mi - ne De - us._____

mf
Om - ni bus in - te spe - ran - ti - bus et a - ni - ma - bus te ti - men - ti - bus.

pp
Quan - tum bo - num est in si - len - ti - o praes - to - la - ri

2 2

sa - lu - ta - ri tuum._____

O_____ be - a - tum ho - mi - nem qui tu pro - tec - tor - es Do - mi - ne._____

2 4 2

Spes e - jus in te Do - mi - ne

p rit. .

De - o, ip - si - us qui coe - lum et ter - ram fe - cis - ti._____

Tenor

Quam Benignus Es

Jānis Lūsēns

Musical score for Tenor, titled "Quam Benignus Es" by Jānis Lūsēns. The score is written in G major and consists of ten staves of music. The time signatures are 4/4, 3/4, 4/4, 3/4, 6/4, 3/4, 4/4, 3/4, 6/4, and 3/4. The score includes dynamic markings such as *M*, *mf*, *pp*, and *rit.*, as well as performance instructions like *4*, *2*, and *rit.*. The music features a variety of note values, including half notes, quarter notes, and eighth notes, with some measures containing rests or fermatas. The score is presented in a clean, professional layout with a white background and black notation.

Quam Benignus Es

Jānis Lūsēns

